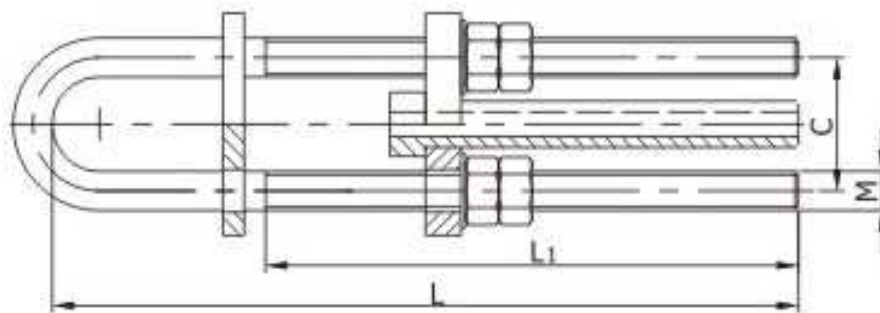




## Guy Wire Fittings

Guy Wire fittings are mainly used to fix guy wire of the tower, including all parts from tower's arm to ground guy wires. WINNING® supplies superior quality guy wire fittings to confirm stable and safe operation.

### 1. NLY Strain Clamp (compression joint, adjustable type)

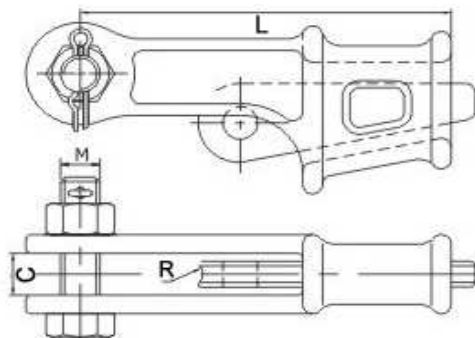


Catalog No.	Steel Wire Diameter (mm)	Main Dimensions (mm)				Failure Load (kN)	Weight (kg)
		C	M	L	L1		
NY-50	1×7-9.0-155-GB1200-75	62	18	320	230	65.1	3.40
NY-100	1×19-13.0-155-GB1200-75	74	22	320	300	139.6	5.35
NY-120	1×19-14.0-155-GB1200-75	94	24	580	400	196.5	7.90
NY-135	1×19-15.0-155-GB1200-75	94	24	580	400	196.5	8.40
NY-150	1×19-16.0-155-GB1200-75	104	24	580	400	245.0	12.2
NY-165	1×37-16.8-155-GB1200-75	104	27	588	400	255.0	12.5
NY-180	1×37-17.5-155-GB1200-75	114	30	640	450	300.0	13.6
NY-195	1×37-18.2-155-GB1200-75	114	30	640	460	300.0	14.5
NY-265	1×37-21.0-1570-GB1200-75	28	36	670	440	367.0	26.6
NY-100E	1×19-13.0-1570-GB1200-88	84	22	490	300	151.0	6.30
NY-125E	1×19-14.5-1570-GB1200-88	94	24	580	380	188.0	9.10
NY-150E	1×19-16.0-1570-GB1200-88	104	27	610	400	228.0	12.0
NY-180E	1×19-17.5-1570-GB1200-88	114	30	640	420	273.0	15.6
NLY-240E	1×19-20.0-1570-GB1200-88	128	36	670	440	357.0	22.6

Materials are made of Hot Dip Galvanized Steel. Thief-proof equipment such as security hats, nuts and other special tools can be supplied upon request.



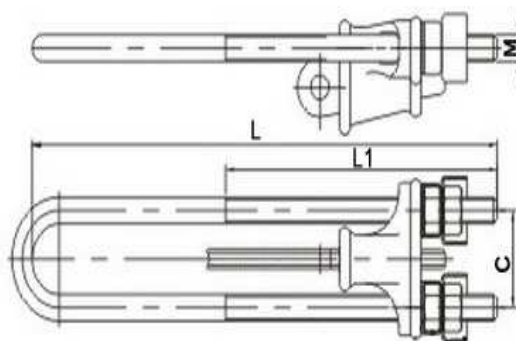
## 2. NX type Wedge Clamp



Catalog No.	Steel Wire Diameter (mm)	Main Dimensions (mm)				Rated Failure Load (kN)	Weight (kg)
		C	M	L	R		
NX-1	6.6~7.8	18	16	150	6.0	45	1.19
NX-2	9.0~11.0	20	18	180	7.3	88	1.76
NX-3	13.0~14.0	24	24	200	7.3	143	3.20
NX-4	15.0~16.0	28	27	280	8.0	164	5.30

The clamp's body and wedge are Malleable Iron; the cotter pin is Stainless Steel; and other parts are made of Hot Dip Galvanized Steel.

## 3. Wedge Clamp (NUT type: adjustable and NU type: non-adjustable)

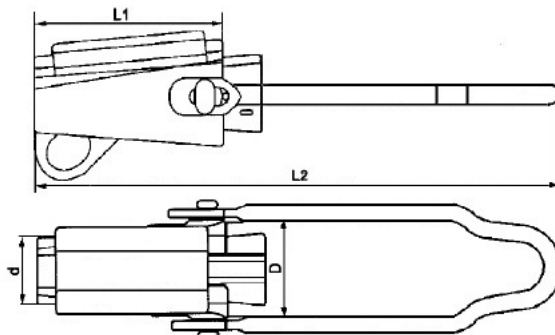


Catalog No.	Steel Wire Diameter (mm)	Main Dimensions (mm)				Rated Failure Load (kN)	Weight (kg)
		C	M	L	L1		
NUT-1	6.6~7.8	56	16	350	200	45	2.10
NUT-2	9.0~11.0	62	18	430	250	88	3.20
NUT-3	13.0~14.0	74	24	500	300	143	5.40
NUT-4	15.0~16.0	82	27	580	300	164	7.20
NU-1	6.6~7.8	56	16	290	70	45	1.92
NU-2	9.0~11.0	62	18	290	70	88	2.61
NU-3	13.0~14.0	74	24	290	60	143	4.21
NU-4	15.0~16.0	82	27	340	70	164	7.27

The clamp's body and wedge are Malleable Iron; the cotter pin is Stainless Steel; and other parts are made of Hot Dip Galvanized Steel.



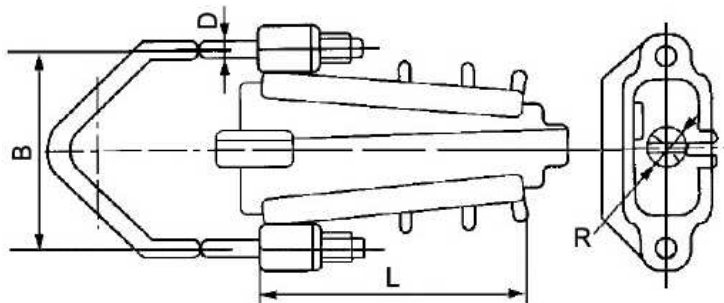
#### 4. Wedge type Deadend Clamp



Catalog No.	Applicable Conductor (mm <sup>2</sup> )	Main Dimensions (mm)				(N)	(N)	Weight (kg)
		L1	L2	d	D			
TW-50	LJ-50	130	366	50.00	58.12	5600	7011	0.65
TW-70	LJ-70	130	366	50.00	58.12	82800	10354	0.65
TW-95	LJ-95	130	366	50.00	58.12	10982	13727	0.65
TW-120	LJ-120	130	366	50.00	58.12	13900	17339	0.85
TW-150	LJ-150	130	366	50.00	58.12	16800	21033	0.85
TW-185	LJ-185	144	380	54.45	64.52	21400	26732	1.05
TW-240	LJ-240	144	380	54.45	64.52	27800	34679	1.05

Used for Aerial Bundled Cable (ABC).

#### 5. Wedge type Deadend Clamp

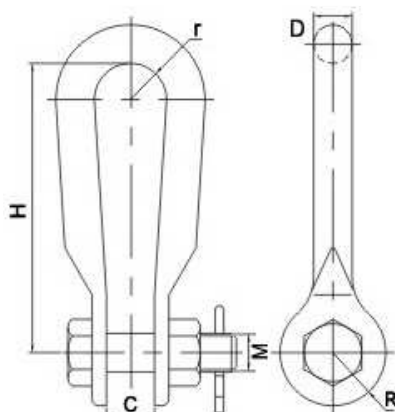


Catalog No.	Applicable Conductor (mm <sup>2</sup> )	Main Dimensions (mm)				Weight (kg)
		B	D	R	L	
NJX-1	JKLYJ-240	128	12	27	170	2.0
NJX-1	JKLYJ-185	128	12	27	170	2.0
NJX-2	JKLYJ-240	128	12	23	170	2.0
NJX-2	JKLYJ-120	128	12	23	170	2.0
NJX-3	JKLYJ-95	108	12	20	160	1.6
NJX-3	JKLYJ-70	108	12	20	160	1.6
NJX-3	JKLYJ-50	108	12	20	160	1.6

Used for Aerial Bundled Cable (ABC). The clamp body is made of Aluminum Alloy; the wedge is made of UV resistant plastic. Other parts are made of Hot Dip Galvanized Steel.



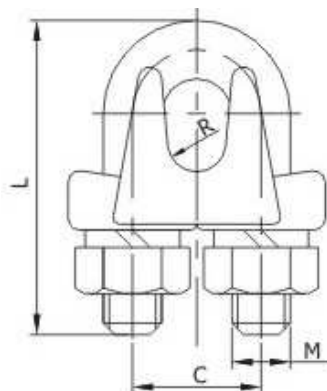
## 6. Shackle (UL type)



Catalog No.	Main Dimensions (mm)						Rated Failure Load (kN)	Weight (kg)
	C	D	H	R	r	M		
UL-7	20	16	120	22	15	16	70	0.65
UL-10	22	18	140	24	17	18	100	0.92
UL-12	24	18	140	30	22	20	120	1.20
UL-16	26	22	140	32	19	24	160	1.64
UL-20	30	24	160	36	22	27	200	2.90
UL-25	34	26	170	40	25	30	250	3.00
UL-30	38	30	170	45	30	36	300	3.50

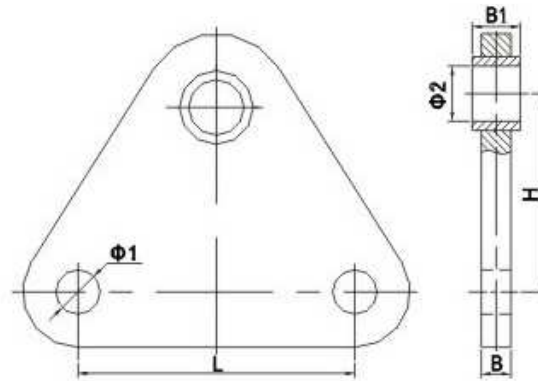
The cotter pin is Stainless Steel; and other parts are made of Hot Dip Galvanized Steel.

## 7. Steel Wire Clip (JK type)



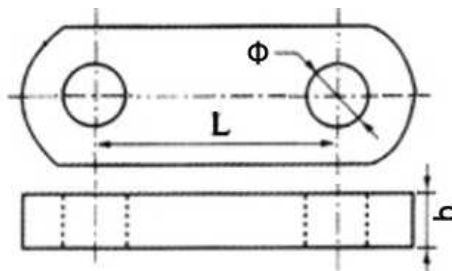
Catalog No.	Steel Wire Diameter (mm)	Main Dimensions (mm)				Weight (kg)
		M	C	R	L	
JK-0	5.4~6.4	8	44	4.5	18	0.09
JK-1	6.6~7.8	10	54	5.0	22	0.18
JK-2	9.0~11.0	10	72	6.0	28	0.30
JK-3	12.0~14.0	20	60	7.5	33	0.65

The body is Malleable Iron; other parts are Steel, all ferrous parts are Hot Dip Galvanized.

**8. Yoke Plate for Double Guy Wire (LV type)**

Catalog No.	Main Dimensions (mm)						Rated Failure Load (kN)	Weight (kg)
	B	B1	Φ1	Φ2	H	L		
LV-1012	16	16	20	20	60	120	100	1.80
LV-1212	16	16	20	24	90	120	120	2.30
LV-1620	16	20	28.5	38	120	200	160	3.40
LV-2115	16	24	24	30	100	150	200	2.50
LV-2518	16	30	24	33	100	180	250	2.70
LV-3014	18	34	28.5	44	120	140	300	4.60
LV-3016	18	32	26	39	120	160	300	5.40
LV-3018	18	32	26	39	120	180	300	5.90
LV-4025	24	36	30	45	150	250	400	9.50
LV-5020	30	38	33	45	150	200	500	8.20

Materials are Hot Dip Galvanized Steel.

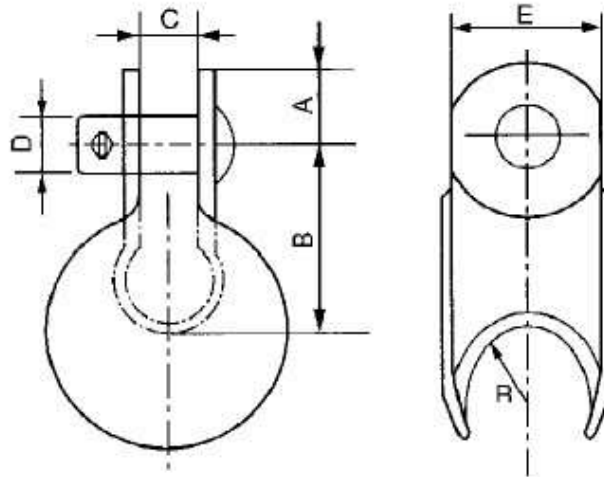
**9. Strap (PD type)**

Catalog No.	Main Dimensions (mm)			Rated Failure Load (kN)	Weight (kg)
	b	Φ	L		
PD-7	16	18	70	70	0.45
PD-10	16	20	80	100	0.67
PD-12	16	24	100	120	0.94
PD-16	18	26	100	160	1.10
PD-20	26	30	120	200	2.40

Materials are Hot Dip Galvanized Steel.



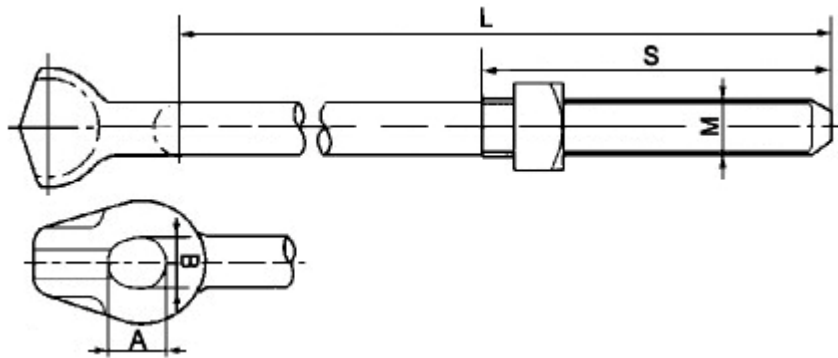
**10. Thimble Clevis**



Catalog No.	Main Dimensions (mm)						Weight (kg)
	A	B	C	D	E	R	
XG-7A	25	54	19	12	40	26	0.50
XG-7B	25	54	19	16	40	35	0.60

Materials are Hot Dip Galvanized Steel.

**11. Anchor Rod**

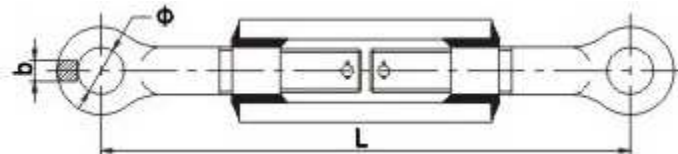


Catalog No.	Main Dimensions (mm)					Rated Failure Load (kN)	Weight (kg)
	M	L	S	A	B		
XLZ-01B	16	203	102	17.5	14.3	56	0.35
XLZ-02B	16	254	102	17.5	14.3	56	0.40
XLZ-03B	16	305	152	17.5	14.3	56	0.50
XLZ-04B	20	254	102	20.6	17.5	60	0.90
XLZ-05B	20	305	102	20.6	17.5	60	0.95

Materials are Hot Dip Galvanized Steel.



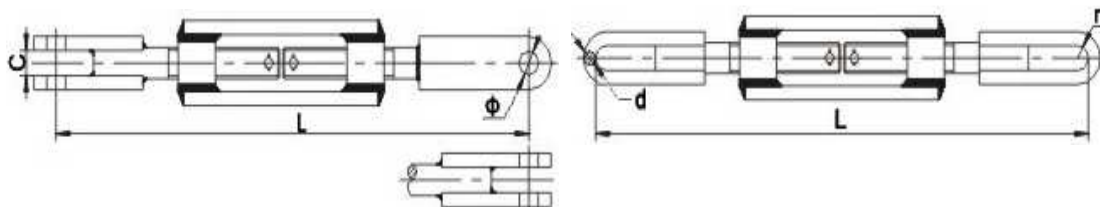
### 12. Turnbuckle (Round type)



Catalog No.	Main Dimensions (mm)			Rated Failure Load (kN)	Weight (kg)
	L (adjustable)	b	Φ		
LH-7 (250~290)	250~290	16	20	70	2.7
LH-7 (270~320)	270~320	16	20	70	2.8
LH-7 (300~500)	300~500	16	20	70	4.0
LH-7 (470~740)	470~740	16	20	70	4.3
LH-7 (500~800)	500~800	16	20	70	4.6
LH-7 (530~850)	530~850	16	20	70	4.8
LH-7 (650~980)	650~980	16	20	70	8.5
LH-10(360~500)	360~500	16	20	100	4.3
LH-10(450~650)	450~650	16	20	100	4.8
LH-10(375~525)	375~525	16	20	100	4.4
LH-10(500~800)	500~800	16	20	100	5.1
LH-10(450~650)	450~650	24	30	200	7.5
LH-10(570~730)	570~730	24	30	200	8.0

The cotter pins are Stainless Steel, and other parts are Hot Dip Galvanized Steel.

### 13. Turnbuckle (Channel Clevis type, U type)



Catalog No.	Main Dimensions (mm)			Rated Failure Load (kN)	Weight (kg)
	L (adjustable)	b	Φ		
LH-10C	570~730	20	20	100	7.00
LH-12C	570~730	30	20	120	8.00
LH-20C	570~730	30	30	200	14.5

**Below Specifications are for Figure 2(Right); U type Turnbuckle**

Catalog No.	Main Dimensions (mm)			Rated Failure Load (kN)	Weight (kg)
	L (adjustable)	d	r		
LH-10	670~820	18	11	100	6.70

The cotter pins are Stainless Steel, and other parts are Hot Dip Galvanized Steel.